

COMMUNITY SCAN PROJECT

SEASIDE, CA



DUAL LANGUAGE
ACADEMY MONTEREY PENINSULA

De: Citlalie Tello, and Shirley Ramos

LA DEMOGRAFÍA

- Superficie: 25.3819 Kilómetros (9.84 Square miles) cuadrados
- 10.0584 Kilómetros (33 Ft.) sobre el nivel del mar
- Población 34,182 (2014 Census Estimate)
- Porcentaje de graduados de preparatoria: 72.6%
- Porcentaje de graduados con licenciatura: 22.9%
- En el 2015 se reportó que 32.1% de la población hablaba el español

Culturas demográficas

48.4%	Anglo
43.4%	Hispano o Latino
9.7%	Asiático
8.4%	Afro americano
1.6%	Isleño del pacífico
1.1%	Nativo americano

COMPRAMOS CASA?

1391 ORD GROVE AVE

- 2 CAMAS 1 BAÑO 1,032 SQFT
- \$519,999 EST. MORTGAGE \$1,928/MO
- PRECIO PROMEDIO DE HOGARES: \$343,800
- INGRESO MONETARIO DE LOS HOGARES: \$52,538
- SOLO EL 38.6 % DE HOGARES SON HABITADOS POR SUS DUEÑOS

Family keeps asking what I want for the holidays

IS RENT



A CHRISTMAS PRESENT?

ifunny.co

ALQUILAMOS?

Average Rent in Seaside, CA

🔄 Last updated Dec 2017



Average Rent

All rentals

\$1,650

Studio

\$518

1 Bed

\$1,420

2 Beds

\$1,650

3 Beds

\$2,150

LA RELIGION

50% ATEOS, 36.2% CATÓLICOS, 12.9% BUDISTA ,
5.7% EVANGELISTAS, 4.4% OTRO, 2.7%
PROTESTANTES,

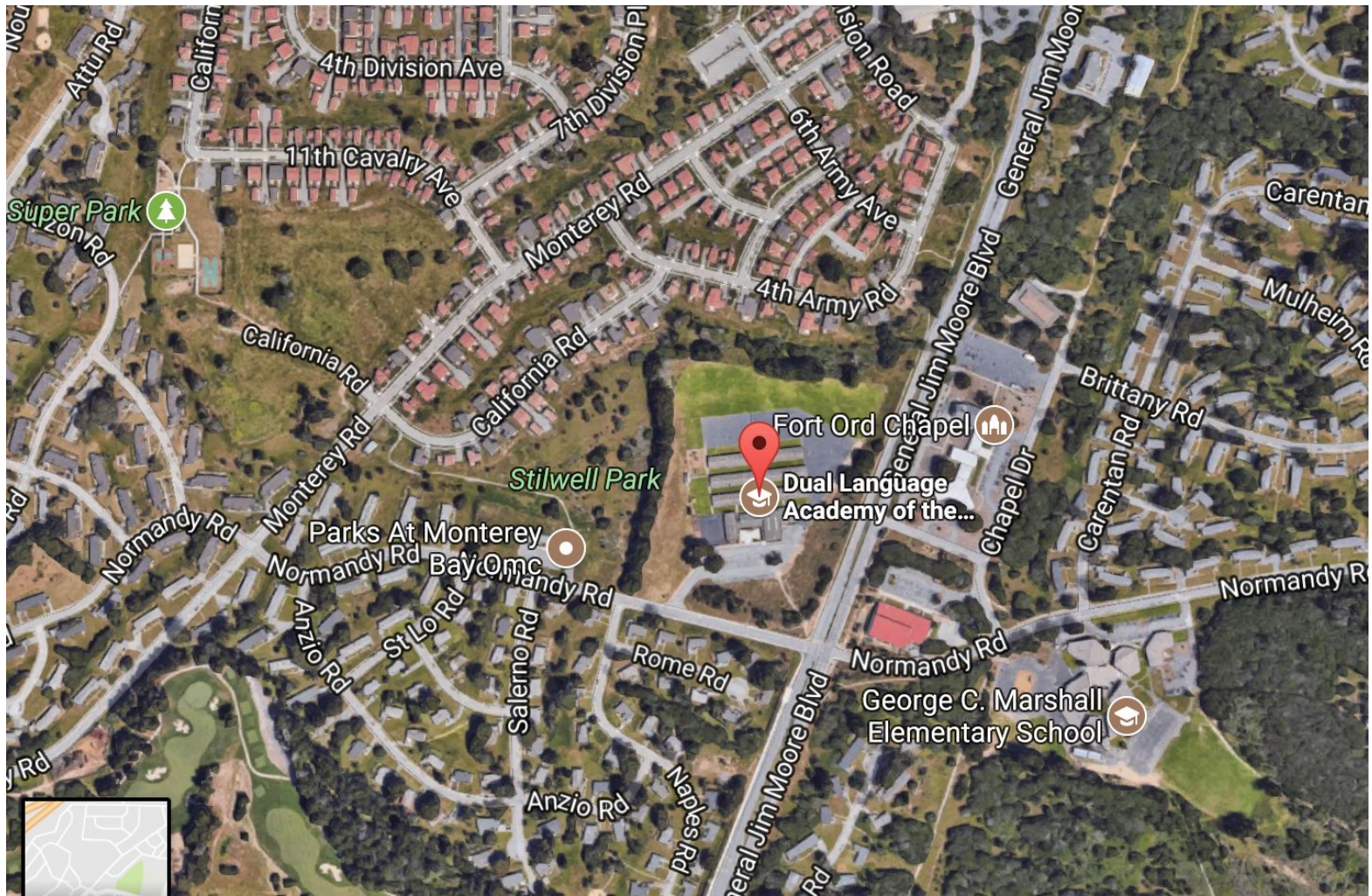




Monterey Peninsula
Unified School District

DUAL LANGUAGE ACADEMY
OF THE
MONTEREY PENINSULA

(DLAMP)



SCHOOL VISION

THE DUAL LANGUAGE ACADEMY OF THE MONTEREY PENINSULA OFFERS A UNIQUE IMMERSION OPPORTUNITY FOR STUDENTS TO BECOME FLUENTLY BILINGUAL AND BI-LITERATE IN ENGLISH AND SPANISH. STUDENTS ENTER THE FIRST DAY OF SCHOOL AND ARE IMMEDIATELY IMMERSSED IN SPANISH FOR HALF OF THE SCHOOL DAY, AND IN ENGLISH FOR HALF OF THE SCHOOL DAY. INSTRUCTION IN CORE SUBJECT AREAS SUCH AS MATH, SCIENCE AND SOCIAL STUDIES IS PROVIDED THROUGH A TARGET LANGUAGE (EITHER ENGLISH OR SPANISH) BY HIGHLY TRAINED TEACHERS WHO SPECIALIZE IN DEVELOPING SECOND LANGUAGE FLUENCY IN CHILDREN. SINGING AND SOCIAL INTERACTION ARE AN INTEGRAL PART OF OUR PROGRAM. BEGINNING IN KINDERGARTEN, ENROLLMENT IS MONITORED SO THAT A BALANCE OF NATIVE ENGLISH SPEAKERS AND NATIVE SPANISH SPEAKERS IS CREATED AND MAINTAINED. THE PROGRAM IS CURRENTLY A K-8 LOCALLY FUNDED CHARTER SCHOOL BY THE NAME OF THE DUAL LANGUAGE ACADEMY OF THE MONTEREY PENINSULA, OR DLAMP.

DLAMP INFO

- PUBLIC CHARTER SCHOOL GRADOS K-8TH
- CADA CLASE (O SUJETO) LOS ENSEÑAN EN LOS DOS IDIOMAS DEL INGLÉS Y EL ESPAÑOL
- CADA ESTUDIANTE APRENDEN LOS DOS IDIOMAS AL MISMO TIEMPO.
- SE REQUIERE QUE LOS PADRES COMPLETEN HORAS VOLUNTARIAS EN LA ESCUELA

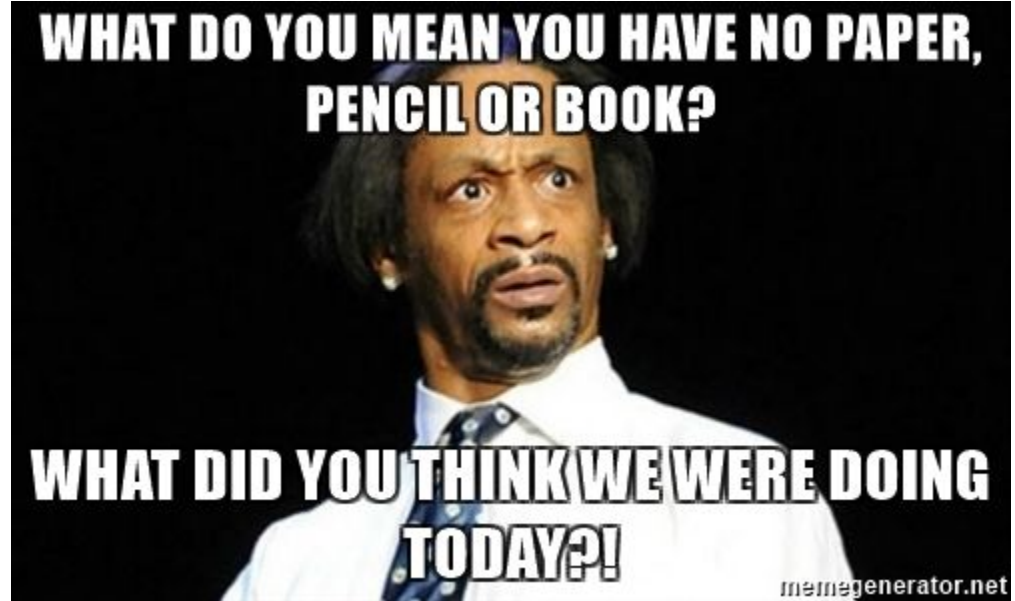


SHIRLEY'S EXPERIENCE

6, 7, Y 8 GRADO: MS. LEVI

3 GRADO: MS. CONTRERAS

3 GRADO: MS. CONTRERAS



CITLALI'S EXPERIENCE

KINDER: MS. SERVIN

8TH GRADE: MS. LEVI

ADULT ESL: MS. OSABA

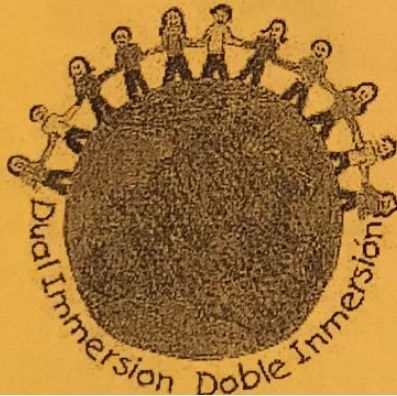
DLAMP TWITTER

Habilidades iniciales de inglés para adultos en DLAMP

Acompañenos los martes y miercoles de 6:00pm a 8:00pm para **clases gratis de inglés para adultos** en la Academia de Doble Lenguaje de la Peninsula de Monterey.

Direccion: 225 Normandy Rd. Seaside, CA 93955

Para cualquier pregunta contacte a la Maestra Osaba al numero (951) 675-4196 o por correo electronico posaba@mpusd.net





THANK YOU!

